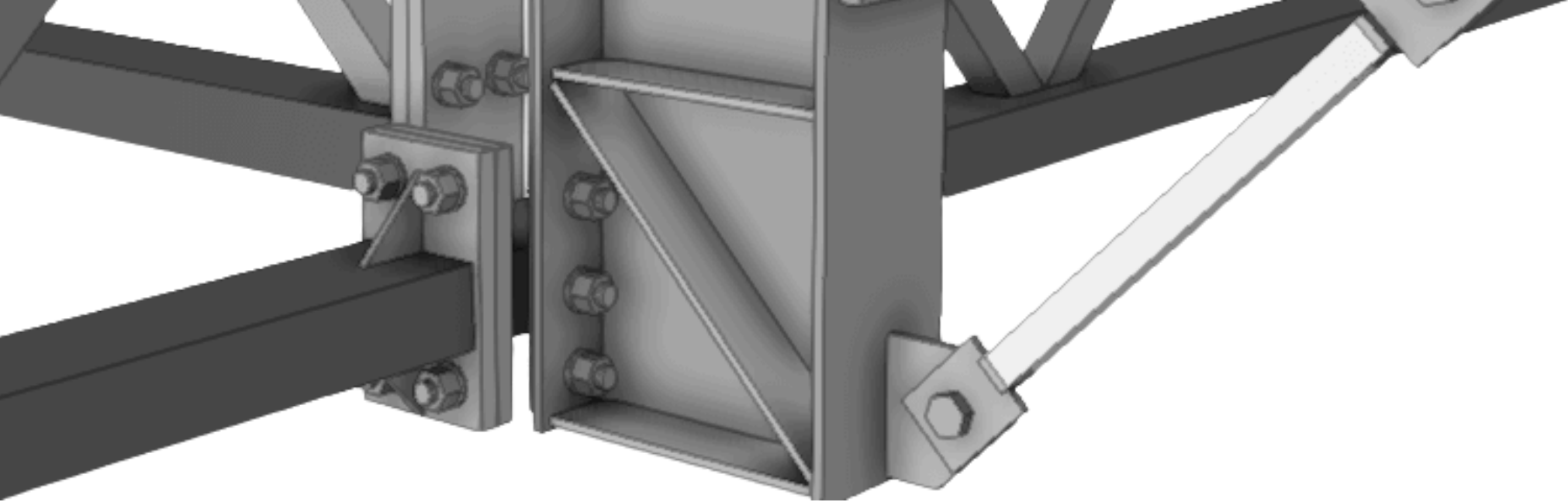


**SKILLS  
ENGINEER  
ACADEMY**



04651 275277 / +91 75981 36335





# **GROWTH SUCCESS PLACEMENT**

*Support*

Unlock your potential, refine your skills, and step into a future of limitless opportunities. Grow, learn, and achieve with us!

# About Us

## A PREMIER INSTITUTE FOR STRUCTURAL STEEL DESIGNING & DETAILING

Skills Engineer Academy, Kanyakumari, is a premier institute offering TEKLA certification and industry-focused training. Founded by expert engineers and consultants, we bridge the gap between education and real-world needs. Our globally aligned courses ensure students gain practical, job-ready skills for the evolving market.

 [WWW.SKILLSENGINEER.COM](http://WWW.SKILLSENGINEER.COM)

### MISSION

We provide top-notch Tekla training with real-time project experience, backed by personalized mentorship through our MilesAhead Programme. With 100% placement support, we ensure every student is job-ready and confident in their career journey.

### VISION

To be a global leader in technical education, empowering learners to drive innovation, excellence, and industry transformation.





# What is Tekla

TEKLA TEKLA is a Building Information Modeling (BIM) software developed by Trimble, primarily used in the construction and engineering sectors for structural design, detailing, fabrication, and project management

WHO USES  
TEKLA

TEKLA is widely used by civil engineers, structural engineers, BIM modelers, steel detailers, and fabricators in the construction industry.



# ABOUT THE INDUSTRY

Structural Steel Designing & Detailing  
A Growing Field with Exciting Opportunities!

Structural engineering ensures the strength and safety of buildings, bridges, and infrastructure. From ancient shelters to modern skyscrapers and space stations, this field has evolved to shape the world around us.

If you're passionate about building the future — this is where it begins!



# Tekla Fast-Track

## BASIC COURSE

- Introduction to Tekla Structures
- Basics Model Creation
- Connections (Basic)
- Drawing Creation & Editing
- AISC Technical Classes
- Site And Shop Knowledge

MOCK INTERVIEWS

LIVE SAMPLE PROJECTS

100% PLACEMENT

COURSE COMPLETION CERTIFICATE

*contact us for more syllabus details*



**Free**

## MILESAHEAD PROGRAM

Online  
DURATION:  
**2 MONTHS**

**12%**  
**DISCOUNT!**

Offline  
DURATION:  
**1.5 MONTHS**

**10%**  
**DISCOUNT!**

# Tekla Mastery

## ADVANCE COURSE

- Tekla Basic Course
- Complete Modeling Techniques
- Basic to Advance Connections
- Numbering & Assigning
- Checking
- Project Setup & Management
- AISC Technical Classes

MOCK INTERVIEWS

LIVE SAMPLE PROJECTS

100% PLACEMENT

COURSE COMPLETION CERTIFICATE

*contact us for more syllabus details*



**Free**

## MIlesaHEAD PROGRAM

Online  
DURATION:  
**3.5 MONTHS**

**12%**  
**DISCOUNT!**

Offline  
DURATION:  
**3 MONTHS**

**10%**  
**DISCOUNT!**

# Tekla Modeling

## COURSE

- Advanced Tekla Modelling
- Connections
- Reports
- Clash Detection
- Model Checking
- Numbering and Organizing

Online  
DURATION:  
**2 MONTHS**

Offline  
DURATION:  
**1.5 MONTHS**

MOCK INTERVIEWS

LIVE SAMPLE PROJECTS

PLACEMENT ASSISTANCE

COURSE COMPLETION CERTIFICATE

# Tekla Expert

## COURSE

- Title Block and Layout
- Report Creation
- Profile Database
- Advanced Settings for Drawings
- Custom Components
- Firm Folder and Model Template

Online  
DURATION:  
**1.5 MONTHS**

Offline  
DURATION:  
**1 MONTH**

MOCK INTERVIEWS

LIVE SAMPLE PROJECTS

PLACEMENT ASSISTANCE

COURSE COMPLETION CERTIFICATE

*contact us for more syllabus details*



# AISC Technical Training

## COURSE

- Elementry & Geometry
- Anchor Bolt
- Welding
- Bolting
- Connections
- Finishing
- Presentation
- OSHA

Online  
DURATION:  
**1.5 MONTHS**

Offline  
DURATION:  
**1 MONTH**

PLACEMENT ASSISTANCE

COURSE COMPLETION CERTIFICATE

# Tekla Corporate Training

## COURSE

- Tailored course content
- Designed for team engagement
- Certificate upon completion

Online

Offline

COURSE COMPLETION CERTIFICATE

**CONTACT  
FOR QUOTE**

*contact us for more syllabus details*

# 15%

OFF WITH YOUR  
STUDENT ID CARD  
**2024, 2025  
& 2026**

**10% OFF for Other Candidates  
on applicable Courses**

**WEEKEND BATCHES  
ARE AVAILABLE**

**MilesAhead Program - Absolutely Free - No Extra Cost**



- 1-1 Expert Mentorship.
- 1-Year Post-Placement Support.
- Soft Skills Training from Top Industry Experts.
- Job Mentoring - We Stay with You Until You Get Placed.



**UNLOCK MORE WITH  
TRIMBLE CERTIFICATION!**

Enhance your credentials with an official Trimble Certificate at an additional cost. Gain global recognition and stand out in the industry. Invest in your future today!



**QUALIFICATION**

# ELIGIBILITY

**B.E/B.Tech/M.E/M.Tech/Diploma  
Civil & Mechanical Engineering**

*Contact  
Us*

CONTACT US FOR  
**DEMO CLASS**  
AND ENQUIRY



**SKILLS  
ENGINEER  
ACADEMY**

+91 75981 36335 | 04651 275277



[WWW.SKILLSENGINEER.COM](http://WWW.SKILLSENGINEER.COM)

[info@skillsengineer.com](mailto:info@skillsengineer.com)

Vellicode Jn, Mulagumoodu, Kanyakumari District,  
TamilNadu - 629167